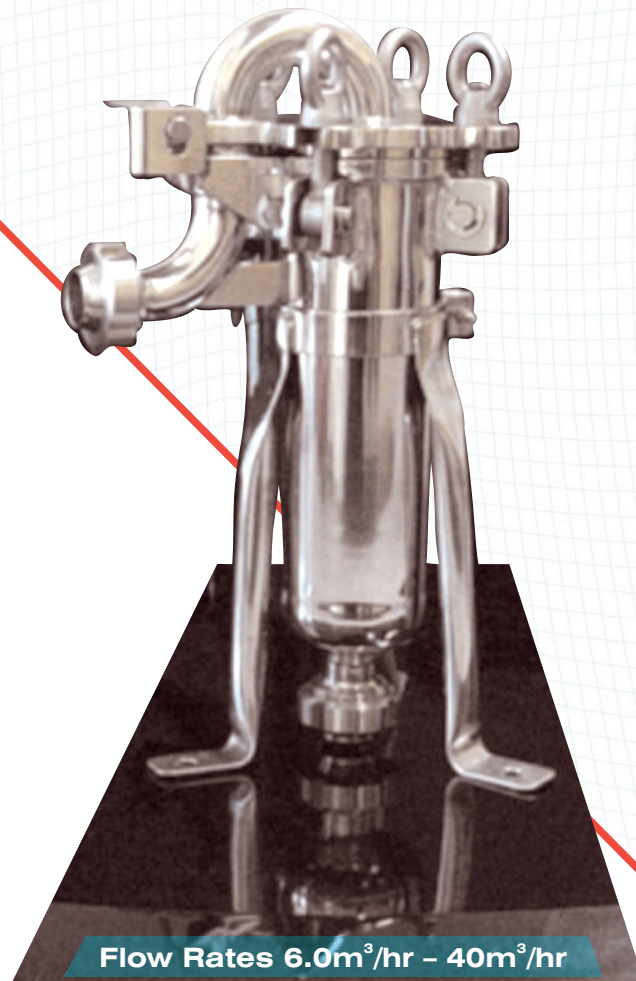


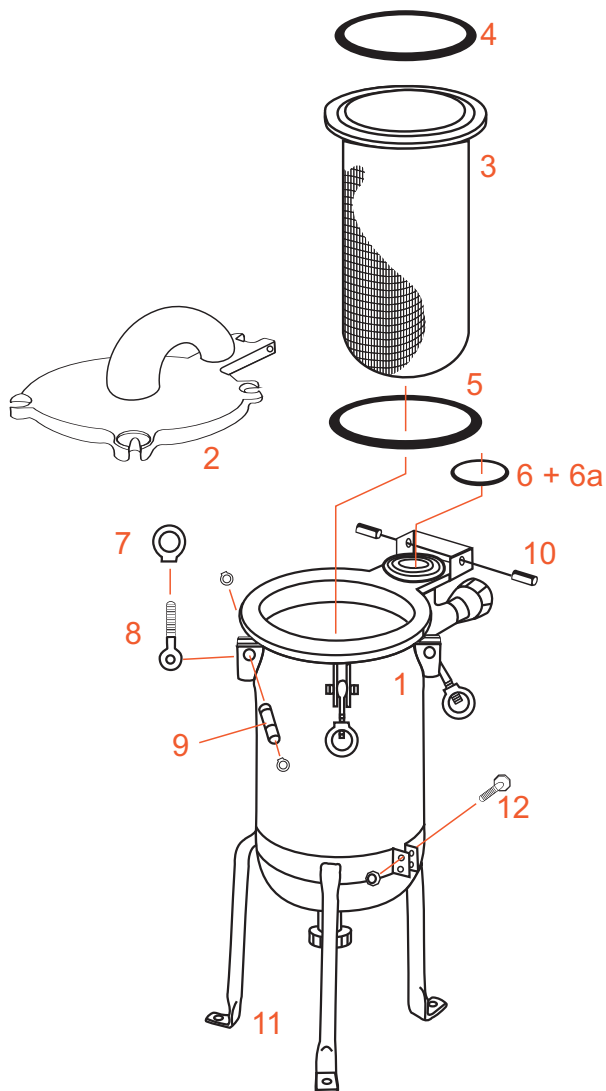


Food Grade, Pharmaceutical & Dairy Applications



Flow Rates 6.0m³/hr – 40m³/hr

FILTER HOUSING



GAF FILTER SYSTEMS

Ind No	Description	No Req.
1	Pressure Vessel	1
2	Cover plate	1
3	Restrainer Basket	1
4	O-Ring No. 442 (FDA)	1
5	O-Ring No. 445 (FDA)	1
6	O-Ring No. 333 (FDA)	1
6a	L-version: O-Ring No. 337 (FDA)	1
7	Eye nut M16	4
8	Swing eye bolt M16	4
9	Bolt with Lock rings	4
10	Hinge pin	2
11	Leg assembly	1
12	Nut and bolt	2

Technical Data - Standard Models

MODEL	MN 1A	MN 1AL	RBT-1BS	RBT-1AS	RBT-1BSL	RBT-1ASL
MATERIAL	316 LSS	316 LSS	304 LSS	316 LSS	304 LSS	316 LSS
FLOW RATE (m ³ /hr @ 1cP)	6.0	12.0	20.0	20.0	40.0	40.0
MAXIMUM OPERATING PRESSURE BAR	8.0	8.0	8.0	8.0	8.0	8.0
MAXIMUM DIFFERENTIAL PRESSURE BAR	2.5	2.5	2.5	2.5	2.5	2.5
CONNECTIONS RJT	38	38	50	50	50/75	50/75
FILTER BAG SIZE	O3	O4	O1	O1	O2	O2
SURFACE FINISH	320/400 GRIT	320/400 GRIT	320/400 GRIT	320/400 GRIT	320/400 GRIT	320/400 GRIT

Variations of above available to suit specific applications

